

# PEYC FIG Sailing Instructions - 2010

Reduced set for Bosun's Locker & Queen Margaret Trophy FIG races only.  
Issued by the PEYC Sailing Secretary in May 2010 to replace all previous issues.

1: General 2: E Breakwater Starts & Finishes 3: Committee Boat Starts & Finishes 4: FIG Trophy Races

## Section 1: General

### 1.1 Rules

Racing at PEYC will be governed by the Racing Rules of Sailing (RRS), the prescriptions of the RYA and the rules of the appropriate classes, except as any are changed by these sailing instructions. The Exoneration Penalty, RYA Arbitration and Advisory Hearing of the RYA Rules Disputes Procedures will be available.

### 1.2 Entries

- (a) A Race Entry Form duly signed (& with any applicable visitor race fees), must be submitted to the PEYC Membership Secretary, PEYC Sailing Committee or the Race Officer. By entering, the owner or representative undertakes to abide by the Racing Rules of Sailing & these Sailing Instructions and acknowledges that they have third party insurance liability coverage of at least £2,000,000.
- (c) Competitors must register on the correct race entry sheet, at the Race Management table in the PEYC Clubhouse, for each race starting at Port Edgar in which they intend to compete.

### 1.3 Construction & Equipment Standards

- (b) Yacht sailors must wear a correctly fitted lifejacket or personal buoyancy aid, complying with the relevant EN standard, if International Code (IC) flag 'Y' is displayed before the class warning signal, indicating that RRS40 is in operation. At other times the RYA recommends that 'you wear a lifejacket or buoyancy aid unless you are sure you don't need to'.
- (c) Yachts must comply with the current Forth Yacht Clubs Association (FYCA) Construction & Equipment Regulations (available at the club or on the FYCA web site at: [www.fyca.org.uk](http://www.fyca.org.uk)) and may be subject to inspection as directed by the PEYC Sailing Committee.  
FYCA Category 4 applies to the Bosun's Locker and Queen Margaret Trophy races.
- (e) Yachts must be equipped with a marine band radio, with channels 16, 37 and 71, that should be switched on and monitoring channel 37 while racing.

### 1.4 Results System & Handicaps

Race result calculations will be based on the Portsmouth Yardstick handicap system using the current FYCA 2010 allocated handicap, or if unavailable the RYA YR2/10 number, or if unavailable a PEYC Trial Number.

### 1.5 Notices to Competitors

Notices to competitors will be posted on the official notice board outside the PEYC Clubhouse.

### 1.6 Changes in Sailing Instructions

- (a) Any change to the sailing instructions will be posted a minimum of one hour before the scheduled start to which it applies and will be indicated by displaying International Code Flag L at the PEYC Clubhouse flagpole and at the start. Any major change to the schedule of races will be posted a minimum of five days before it takes effect. Flag L is displayed only when a change is first posted; thereafter it is the competitors' responsibility to check for previously posted changes.
- (b) When there is insufficient time for procedure 1.6(a), AP postponement flag with Flag L indicates that it is the competitor's responsibility to come within hailing distance of the Race Officer or listen on Channel M1 (37) to receive changes to the Sailing Instructions verbally. The Race Officer will terminate the postponement once satisfied that all competitors have had sufficient opportunity to be informed.

### 1.8 Schedule of Races

Bosun's Locker Trophy: Sun 9<sup>th</sup> May Div-1: 11:00 Div-2: 11:05 Time limit: 19:00 Extension: 2:25

Queen Margaret Trophy: Sun 5<sup>th</sup> Sept Div-1: 11:00 Div-2: 11:05 Time limit: TBA Extension: TBA

**NB:** Committee boat starts as per Section 3 are planned for these races, positioned ~0.2nm NW of the Beamer Rock, with the finish line at the Port Edgar E Breakwater. If the committee boat is unavailable, starts will be from the E Breakwater as per Section 2. Visitors are recommended to call up on channel 37 to confirm starting arrangements.

### 1.9 Class Flags

#### (a) Yacht Classes

Red/Blue diagonal flag	Div-1 Yacht Combined Class	Standard handicap <= 974
Red flag	Div-1 Yacht Flight #1	Standard handicap 875-974
Blue flag	Div-1 Yacht Flight #2	Standard handicap <= 874
Yellow/Purple diagonal flag	Div-2 Yacht Combined Class	Standard handicap >= 975
Yellow flag	Div-2 Yacht Flight #1	Standard handicap >= 1050
Purple flag	Div-2 Yacht Flight #2	Standard handicap 975-1049

### 1.10 Racing Area

- (a) The Racing Area is on the River Forth Estuary adjacent to Port Edgar, as shown on the chart in appendix A. Trophy Race courses extend from Kincardine to Anstruther. Boats must keep out of the Rosyth (150m minimum distance) & Crombie Protected Areas as shown on Admiralty Charts No 736/7. Boats must keep a minimum distance of 30m from the Hound Point & Braefoot Tanker Terminals & any tanker berthed there.
- (b) Ships have right of way in the shipping channels, as per the Forth Ports byelaws, and boats racing must not obstruct them. Particular attention must be paid to the restricted channel through the Forth Bridges where ships change course by 40 degrees. Boats reported for obstruction by Forth Ports shall be subject to protest without time limit. This amends SI 1.16.
- (c) As a last resort to avoid obstructing ships, a boat may use her engine, or any other means of propulsion, without retiring but must report such use to the Race Officer immediately after finishing. A Protest Committee will review the details and may impose a penalty if advantage is deemed to have been gained. This amends RRS 42 Propulsion.

### 1.11 Marks

Course marks are as described in appendix B.

### 1.12 Propulsion after Preparatory Signal

A boat arriving late for the start may remain under engine, paddles or other means of propulsion after her Preparatory Signal providing that, after ceasing such propulsion & before crossing the Start Line in the direction of the first mark, she completes a two-turn penalty on the pre-start side of the starting line or its extensions, keeping clear of all other boats during this manoeuvre.

### 1.15 Time Limits & Extensions

RRS35 shall not apply. The time limit for each race is shown in SI 1.8. Finish times will be valid for all boats finishing within the time limit. When the first yacht finishes within the time limit, finish times will be valid for those boats which finish within the time limit plus the extension period.

## Section 2: E Breakwater Starts & Finishes

### 2.1 Signals

- (a) Signals will be displayed at the Starter's Box on the end of the east breakwater of Port Edgar.
- (b) The schedule & sequence of start times may be altered by the Race Officer, before displaying the courses, by exercising the Flight Start option in SI 2.2.

### 2.2 Flight Start Option

Flag F displayed with either or both of the Div-1 & Div-2 Yacht Class Flags indicates that the Race Officer has selected Flight Starts for either or both of the Div-1 & Div-2 yacht classes on the grounds of safety. Flight allocation is based on a yacht's Standard Handicap. The class affected will start in two Flights 5 minutes apart, both sailing the same course with elapsed times of yachts combined in the results calculation. Flight start warning signals are defined in SI 1.9 and shown on page 9. Remaining classes will start in sequence after the flight starts.

### 2.3 Courses Starting at E Breakwater

- (a) The class flag colours & course reference for each class, indicating the courses selected from the list in appendix C, will be displayed in the frame on the end of the east breakwater in start sequence order.
- (b) After starting, boats shall not pass between mark Y & the Starter's Box unless required by the course.

### 2.4 The Start

The Starting Line is defined as the extension of the Transit Line from the main FLAGSTAFF, at the PEYC Starter's Box on the east breakwater of Port Edgar, through the TRANSIT POLE on the end of the breakwater. The outer distance limit of the line is defined by mark W for yacht starts and mark Y for dinghy starts. An inner distance mark may be laid off the east breakwater and for yacht starts only, a yacht shall not rank as a starter if it passes between this mark and the breakwater and fails to return and start correctly.

(NB: For a boat that is starting, when the outer limit mark is more than one of her boat lengths from the Transit

Line on the pre-course side, there is no requirement for her to pass it correctly. See RYA Appeal cases)

**2.5 The Finish**

- (a) The finishing line will be between the main FLAGSTAFF, at the PEYC Starter's Box on the east breakwater of Port Edgar, and mark Y.

**Section 3: Committee Boat Starts & Finishes**

**3.3 Yacht Committee Boat Start Line**

Committee boat starts will normally be at mark E or mark X for yacht starts. The start line shall be between two orange buoys with the committee boat, displaying an orange flag, positioned on the extension of the start line. The committee boat may manoeuvre to sight the line at each start and boats must keep clear.

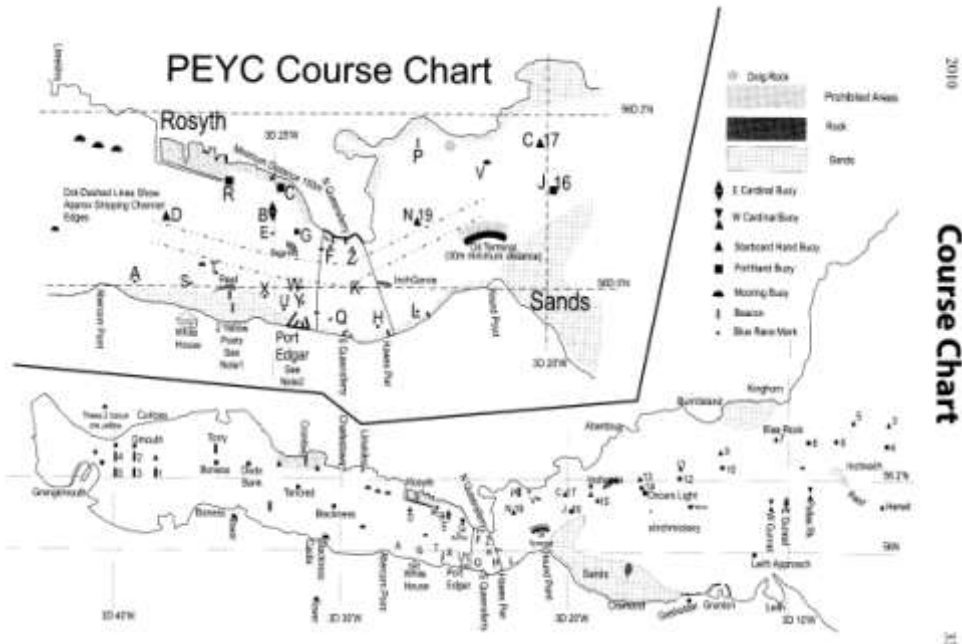
**3.5 Yacht Trophy Courses**

The course reference, selected from the list in appendix C, will be displayed under each class flag on the committee boat. The finish line for these races will be at the east breakwater as per SI 2.5(a).

**Section 4: Yacht FIG Trophy Races**

- 4.1 The Race Officer will be present until 16:00 or for up to 2 hours after the first yacht in each class has finished, whichever is later. If the PEYC Bugee is not flying at the Starter's Box, yachts must take their own finish time & send it to the PEYC Sailing Secretary within one week.
- 4.2 If no boat finishes the full course within the time limit, the race result will be based on times of yachts passing the W-Y gate off the east breakwater at Port Edgar. This amends SI 1.15.
- 4.3 Protests must be sent to the PEYC Sailing Secretary within one week of the race. This amends SI 1.16.

**Appendix A**



**Appendix B**

**Marks List**

REFERENCE	DESCRIPTN	LATITUDE		LONGITUDE	
		DEG	MIN	DEG	MIN
A	Abercorn Orange PEYC Mark	56	0.36	3	27.90
Anstruther	Lighthouses in Transit 330° app	56	13.15	2	41.82
B	Black/Yellow E. Cardinal (Rosyth)	56	0.71	3	25.18
BLACKNESS	Blackness Channel Buoy (Red Cat)	56	1.07	3	30.22
BLAE ROCK	No 7 Channel Buoy (Green Cone)	56	2.80	3	10.87
BONESS	Boness Channel Buoy (Red Cat)	56	2.23	3	35.31
C	Rosyth No3 Buoy	56	0.87	3	25.03
C10	No 10 Channel Buoy (Red Cat)	56	2.05	3	13.30
C11	No 11 Channel Buoy (Green Cat)	56	2.05	3	15.09
C12	No 12 Channel Buoy (Red Cat)	56	1.77	3	15.05
C14	No 14 Channel Buoy (Red Cat)	56	1.52	3	16.82
C15	No 15 Channel Buoy (Green Cat)	56	1.43	3	18.70
C17	No 17 Channel Buoy (Green Cat)	56	1.17	3	20.12
D	Dhu Craig (Green Cat)	56	0.83	3	27.20
DODS	Dods Bank (Red)	56	2.05	3	33.90
E	Beamer North PEYC Mark	56	0.59	3	25.08
E GUNNET	East Cardinal Buoy	56	1.42	3	10.29
F	North Queensferry Orange PEYC Mark	56	0.32	3	24.12
G	Green Cone Buoy, Rosyth Channel	56	0.54	3	24.57
G1	Grangemouth No1 Port Pillar	56	2.10	3	38.00
GMOUTH	Grangemouth N East Buoy (Yellow)	56	2.27	3	39.07
H	Hawes Pier Orange PEYC Mark	55	59.78	3	23.33
HERWIT	Herwit G Cone Buoy; S of Inchkeith	56	1.10	3	6.40
I	Dummy PEYC Mark	55	59.89	3	24.58
INCHCOLM	West Cardinal Buoy	56	1.56	3	18.96
INCHKEITH	Waypoint North of Inchkeith	56	2.33	3	8.19
J	No 16 Channel Buoy (Red Cat)	56	0.75	3	19.81
K	Inchgarvie Orange PEYC Mark	56	0.07	3	23.46
L	Longcraig Orange PEYC Mark	55	59.79	3	22.72
M	Temporary Dinghy Mark - North of X	56	0.07	3	25.00
N	No 19 Channel Buoy (Green Cat)	56	0.73	3	22.49
O	Waypoint West of Inverkeithing Bay	56	0.36	3	23.48
P	St Davids Light Pillar	56	1.38	3	22.29
Q	Queensferry Orange PEYC Mark	55	59.80	3	23.94
R	Rosyth Harbour No6 (Red Can)	56	1.01	3	26.03
S	Society Bank West Orange PEYC Mark	56	0.21	3	26.85
T	Society Bank Orange PEYC Mark	56	0.15	3	26.00
TANCRED	Red Catamaran Buoy	56	1.59	3	31.83
U	West Breakwater Orange PEYC Mark	55	59.92	3	25.12
V	No 1 Mooring Buoy off Downing Pt	56	1.11	3	21.15
W	Start Orange PEYC Mark	55	59.95	3	24.61
W GUNNET	W Gunnet West Cardinal Buoy	56	1.35	3	10.98
X	Society Bank East Orange PEYC Mark	55	59.95	3	25.40
Y	Start / Finish Orange PEYC Mark	55	59.89	3	24.58
Z	North Queensferry Harbour PEYC Mark	56	0.37	3	23.68

**See Sailing Instructions on Page 37**

**NOTES:-**

The marks for Yacht Short Courses & also Dinghy Courses have single letter references.

Yacht Trophy Marks have multiple letter references such as "C10" for the Number 10 Channel Buoy & are enclosed in curly brackets{}

Small letters indicate a mark should be left to starboard whilst CAPITALS indicate PORT. Thus a sequence such as Y{W GUNNET}{sandend} indicates that Y & W GUNNET should be left to PORT & then sandend to starboard.

The marks for Yacht Short Courses & also Dinghy Courses have single letter references.

## Courses, Yacht, Sunday Trophy

REF	COURSE	Cumulative nm	
		Round1	Round2
E51...	j{C15}J{Yw}DY	7.3	10.7
E52...	j{C11}J{Yw}DY	11.4	14.8
E53...	j{C15}J{Yw}{TANCRED}Y	7.3	16.2
E54...	j{BLAE ROCK}J{Yw}DY	16.3	19.7
E55...	j{C11}J{Yw}{TANCRED}Y	11.4	20.2
E56...	j{C15}J{Yw}{BONESS}Y	7.3	20.3
E57...	j{C11}J{Yw}{BONESS}Y	11.4	24.3
E58...	j{BLAE ROCK}J{Yw}{TANCRED}Y	16.3	25.1
E59...	j{inchkeith}{herwit}Jy (TIMEGATE)	21.3	0.0
W51...	d{Wy}j{c15}Jy	3.3	10.7
W52...	d{Wy}j{c11}Jy	3.3	14.7
W53...	{tancred}{Wy}j{c15}Jy	8.8	16.1
W54...	d{Wy}j{blae rock}Jy	3.3	19.6
W55...	{boness}{Wy}j{c15}Jy	12.9	20.2
W56...	{tancred}{Wy}j{c11}Jy	8.8	20.2
W57...	{boness}{Wy}j{c11}Jy	12.9	24.3
W58...	{tancred}{Wy}j{blae rock}Jy	8.8	25.1
W59...	{gmouth}Y (TIMEGATE)	16.9	0.0
W60...	{anstruther}Jy (ANDREW THOMPSON)	29.0	0.0

Anstruther Start Line is with 2 Lighthouses in transit (app 330deg) & up to 2 cables offshore. (There may be an outer distance mark)

**NOTE Trophy races are often started in little or no wind when a seabreeze is expected later. A "downwind" or "downtide" start may be advisable.**

**CAPITAL LETTERS to PORT - small letters to starboard**

**{Wy} or {Yw} means boats must pass between marks Y & W**

**After the start a boat shall not pass between mark Y and the starter's box unless required by the course.**

**See Page 9 for Class Flags & Starting Signals**

### Explanation Of Course List

- 1 First column is the Course Reference, shown from the Race Box.
- 2 Second column is the list of race marks given on Page 34.
- 3 Third/Fourth columns are the CUMULATIVE distance in Nautical Miles for each of 2 rounds. Races may be shortened at the discretion of the race officer. Race Officers must consider the effect of tides & light winds on finishing times.